

Course ISE 322: Database Systems  
Recitation 6 Exercise  
ERD Translation

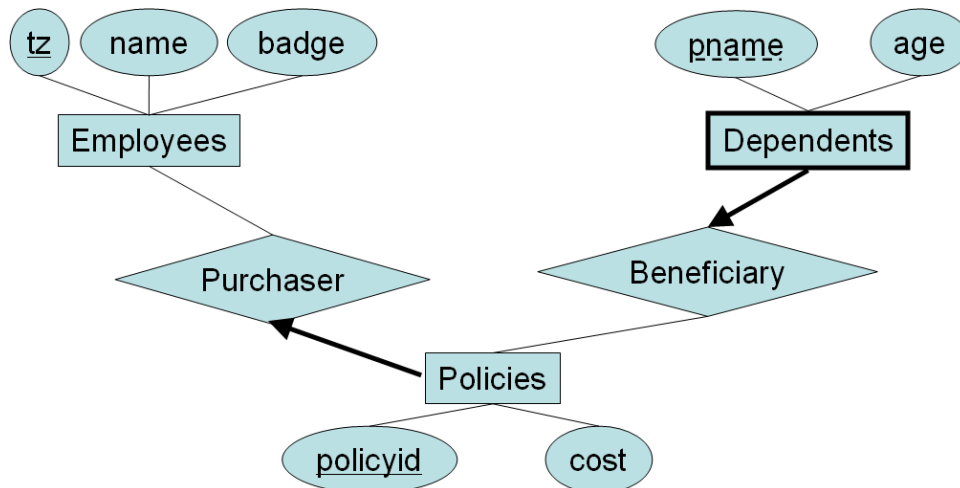
Michael J. May

November 25, 2009

There are three example ERDs in this exercise. Translate each of them into SQL tables using the techniques studied in class.

## 1 ERD Translation 1

Consider the ERD shown in the following figure:

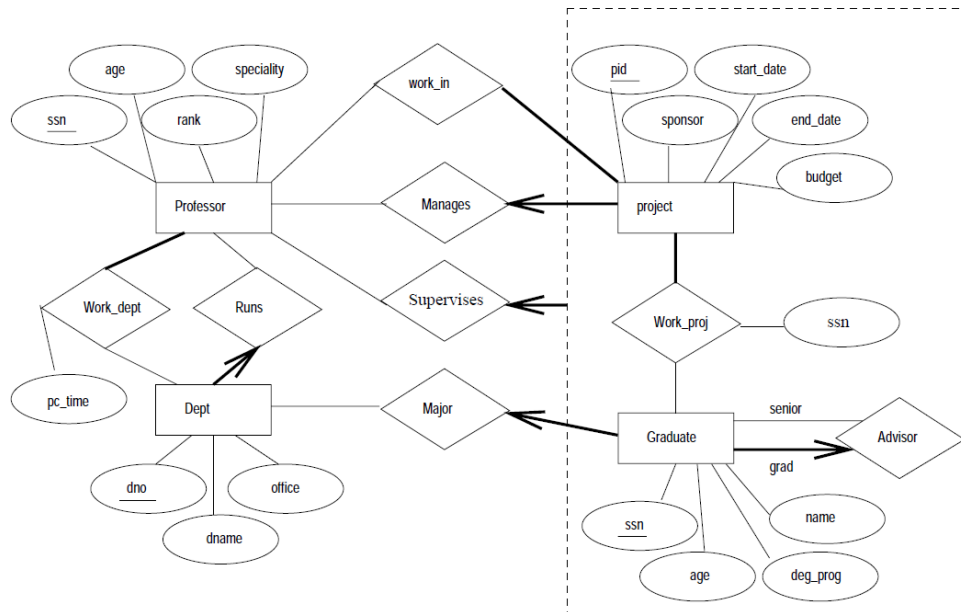


Do the following work based on the figure:

1. Write down the tables needed to implement the ERD.
2. Implement the relations in SQL Server
3. Insert the data into your relations using INSERT commands.

## 2 ERD Translation 2

Consider the ERD shown in the following figure:



Do the following work based on the figure:

1. Write down the tables needed to implement the ERD.
2. Implement the relations in SQL Server
3. Insert the data into your relations using INSERT commands.