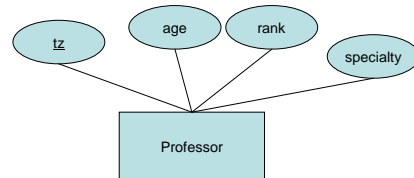


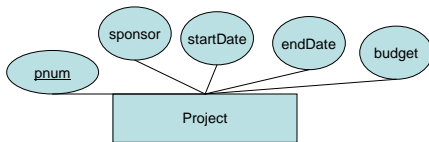
## Recitation 2 ERD

28 October 2009  
Michael J. May

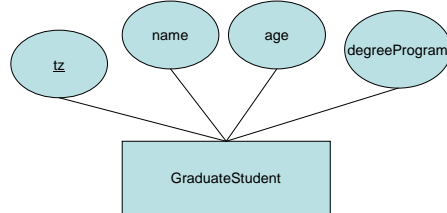
Professors have an id number, an age, a rank, and a research specialty



Projects have a project number, a sponsor name (e.g. NSF), a starting date, an ending date, and a budget

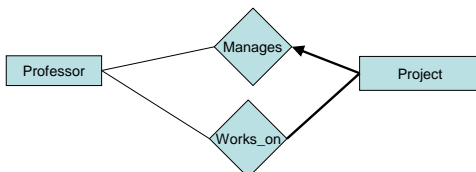


Graduate students have an id number, a name, an age, and a degree program

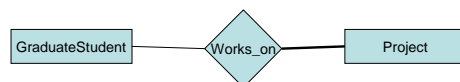


### Professors and projects

- Each project is managed by one professor (known as the project's principal investigator)
- Each project is worked on by one or more professors (known as the project's co-investigators)
- Professors can manage and/or work on multiple projects

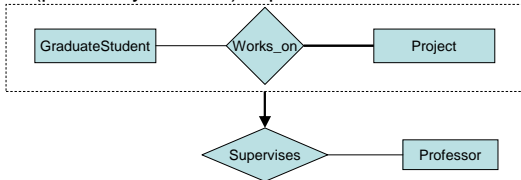


Each project is worked on by one or more graduate students (known as the project's research assistants)

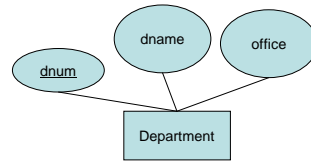


### Graduate students and projects

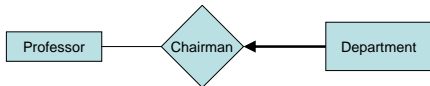
- When graduate students work on a project, a professor must supervise their work on the project. Graduate students can work on multiple projects, in which case they will have a (potentially different) supervisor for each one.



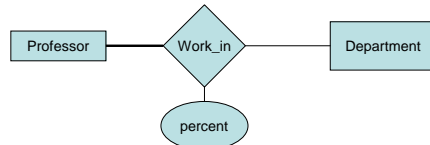
Departments have a department number, a department name, and a main office



Departments have a professor (known as the chairman) who runs the department



Professors work in one or more departments, and for each department that they work in, a time percentage is associated with the job



Graduate Students have one major department in which they are working on their degree



Each graduate student has another, more senior graduate student (known as the student advisor) who advises him or her on what courses to take

