

Course ISE 327, EEE 051: Saving and Restoring Files in OPnet IT Guru

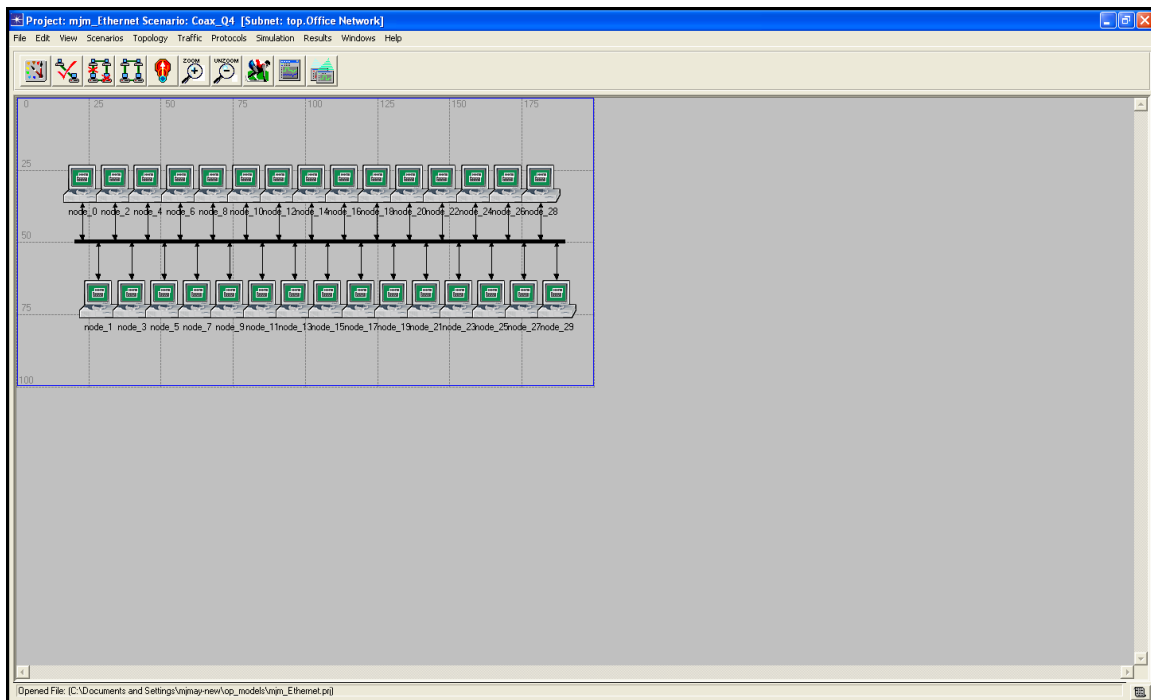
Michael J. May

April 18, 2010

The tool OPnet IT Guru allows you to create scenarios and network setups for experiments. If you don't finish working on an experiment at any one time, you can save your progress and restore it at a later time. This file will explain how to save and restore network setups and scenarios which you have created.

1 Saving Scenarios

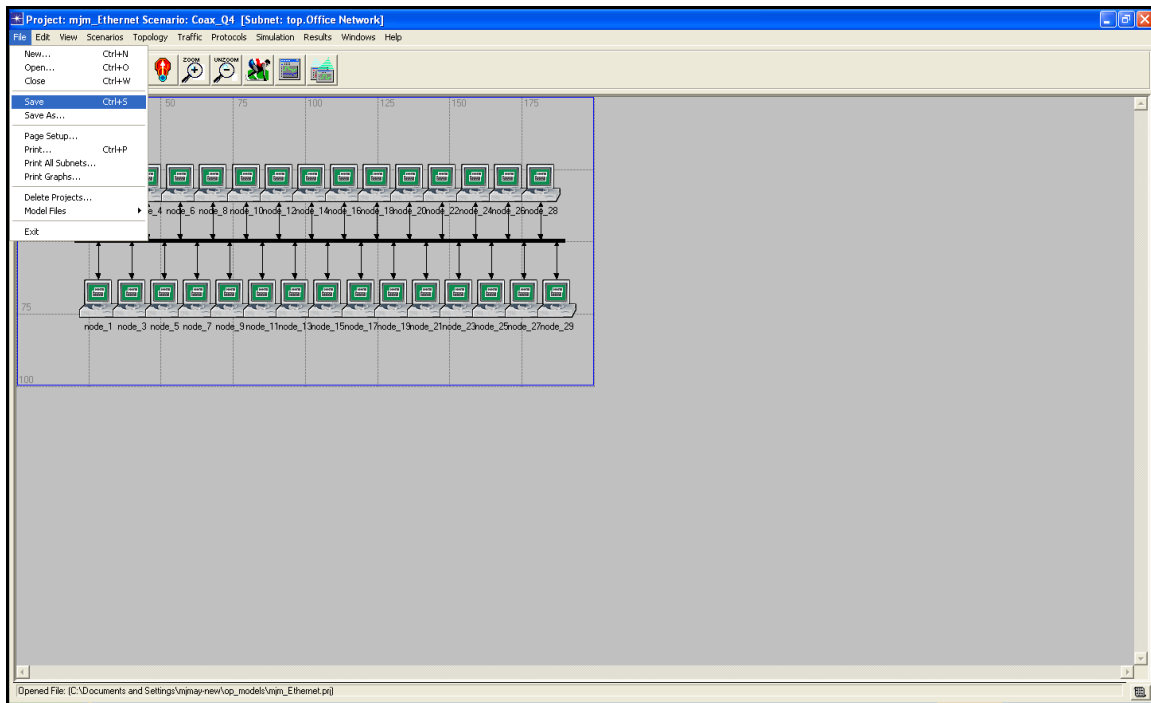
The main window for the OPnet tool is as follows:



Note that the open project directory is written at the very bottom on the window. Here the path is:

`C:\Documents and Settings\mjm\op_models\mjm_Ethernet.prj`

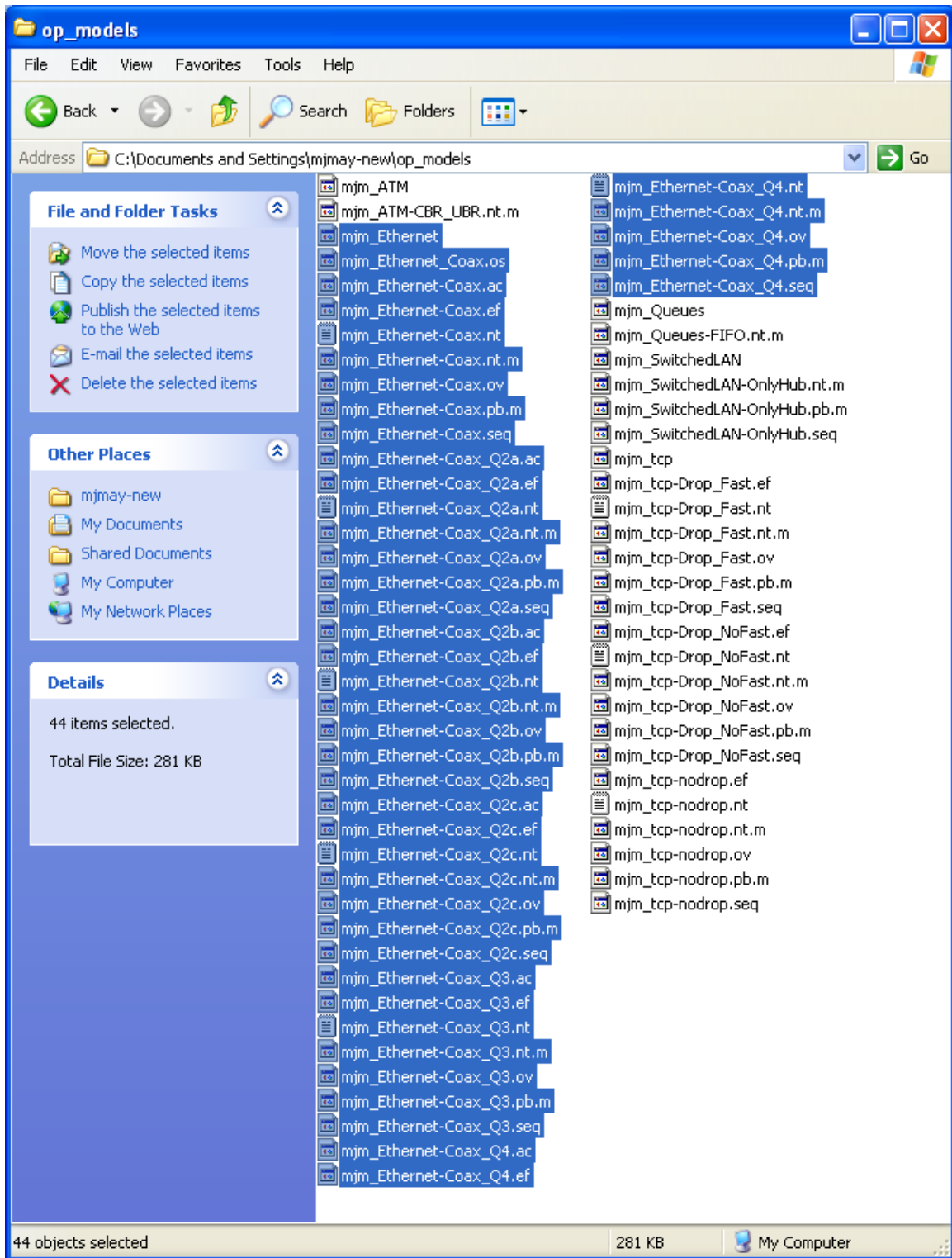
In this directory you will find all of the files that are connected to your scenario and network setup. To save your work, choose the **File** → **Save** menu item:



You can also change the name of the destination file by using **Save As . . .**.
To take your files with you, go to the directory of the project:

`C:\Documents and Settings\mjmay\op_models\mjm_Ethernet.prj`

and copy all of the files which begin with that file name:



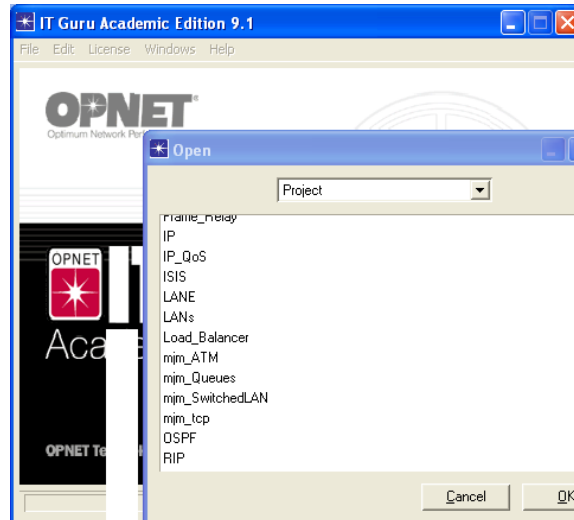
Note that each scenario in the project has its own files. You can have multiple scenarios in a single project, so you may see many different files for the project.

2 Restoring Scenarios

Copy the files for your scenarios as well as the project file to a directory. Let's say it's

`C:\Documents and Settings\mjmay-new\My Documents\mydir1`

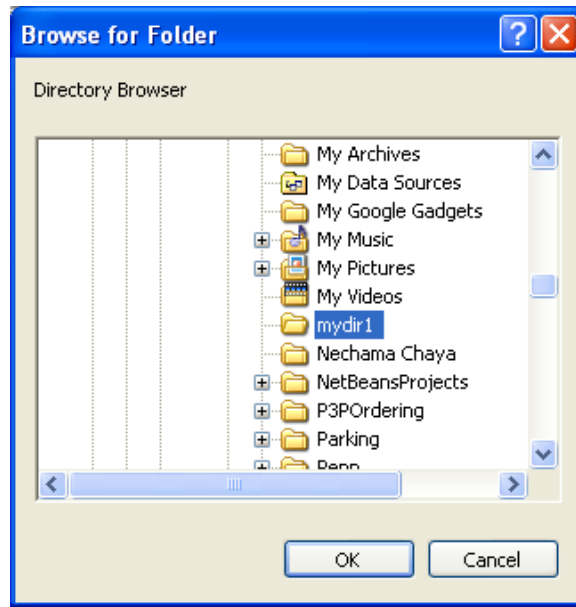
When you open OPnet IT Guru you might not see your project in the **File** → **Open** window:



To see it, you must add the directory for the project to the Project directories. Click on **File** → **Model Files** → **Add Model Directory** ... :



Choose the directory where the project files are (`C:\Documents and Settings\mjmay-new\My Documents\mydir1`)



Save it as your source or working directory depending on whether you intend to continue using this directory in the future.

Now you will see your project file in the **File** → **Open** window:

